



Maitland MS

Media Center Collection Development Plan 2023-24

Aski Melik Brown (Sep 15, 2023 15:50 EDT)

Melik Brown
Principal

Angela Michael
Certified Educational Media Specialist

Table of Contents

Table of Contents	2
Executive Summary	3
District Strategic Plan 2025	3
School Collection Development Plan	3
School Assessment Analysis	4
Collection Analysis	5
Collection Analysis by Category	6
Representation Analysis	7
Results	7
Budget and Purchasing Plan	9
Annual Budget 2023-2024	9
Purchasing Plan 2023-2024	9
Year-to-Year Collection Change	10

Executive Summary

District Strategic Plan 2025

Orange County Public Schools is the eighth-largest school district in the United States and the fourth largest in Florida. The district serves more than 206,000 students at 202 schools and is one of the largest employers in Central Florida with more than 25,000 team members.

Vision: To ensure every student has a promising and successful future.

Mission: With the support of families and the community, we create enriching and diverse pathways to lead our students to success.

School Collection Development Plan

Maitland MS serves 737 students enrolled in grades sixth through eighth. The student population's ethnicity is made of 29% Hispanic and 71% Non-Hispanic students. Additionally, we serve a diverse population made up of 69% White, 24% Black, 0% Native, 2% Asian, 0% Pacific, and 3% Multicultural students.

The administration includes Principal Melik Brown and Assistant Principals Kimberly Pavlonnis and Vaughnsha Thompson. Maitland MS is proud to offer the many special programs which provide students with opportunities. These include PreAP, Sunshine State Young Readers Award, Orchestra/Band, National Junior Honor Society, Chess Club, Athletic Teams, Musical Theatre, Journalism Club/Yearbook, CTE

A thorough analysis of the current media center collection at Maitland MS indicates that the average age of the collection is 2007 and the number of books per student is 19. The [American Association for School Libraries](#) has established a criteria for highly effective media centers that includes a ratio of 15-20 books available per student in the collection.

At this time, Maitland MS does meet the recommended standards for the number of books per student.

The analysis of the collection also revealed the following areas of strengths and concerns:

- In addition to the physical media center collection, the district provides almost 5,000 Ebooks, audiobooks and digital magazines.
- Weeding will focus on the OCPS Catalog Project as well as aged titles in fiction and/or nonfiction.
- Purchases will focus on increasing representation for our Black and Hispanic students.

School Assessment Analysis

The school assessment analysis provides an overview of the school's assessment data for the previous two school years.

Proficiency Data							
Assessment	2021-22	Assessment	2022-23	Assessment	2021-22	Assessment	2022-23
FSA ELA Grade 6	59%	FAST ELA Proficiency Grade 6	49%	FSA Math Grade 6	49%	FAST Math Proficiency Grade 6	59%
FSA ELA Grade 7	54%	FAST ELA Proficiency Grade 7	49%	FSA Math Grade 7	58%	FAST Math Proficiency Grade 7	37%
FSA ELA Grade 8	55%	FAST ELA Proficiency Grade 8	45%	FSA Math Grade 8	24%	FAST Math Proficiency Grade 8	58%
Civics EOC	74%	Civics EOC	67%	FSA Algebra 1 EOC	85%	BEST Algebra 1 EOC	92%
NGSSS Sci 8 EOC	61%	NGSSS Sci 8 EOC	48%	FSA Geometry EOC	100%	BEST Geometry EOC	100%

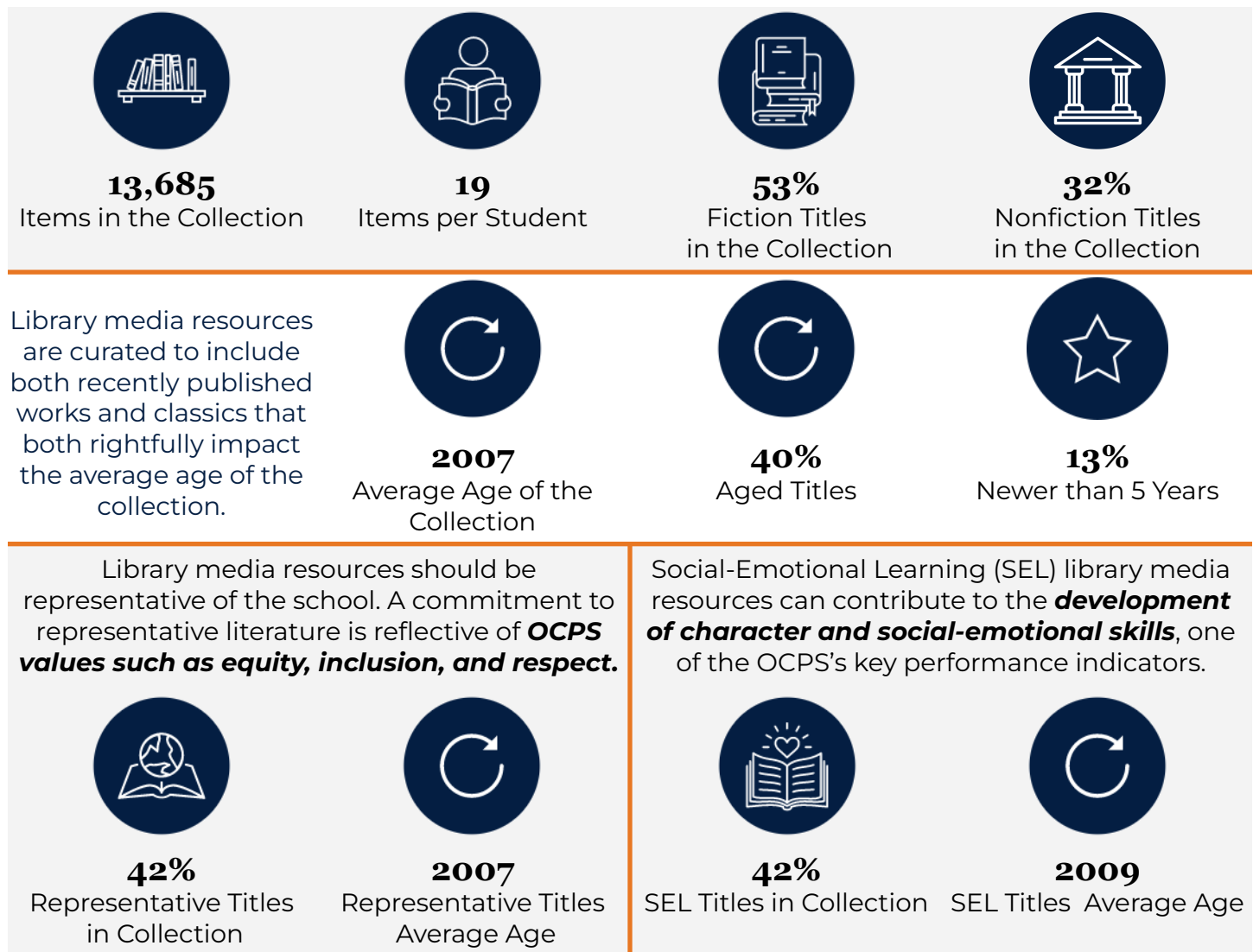
Comparison between 2021-22 and 2022-23 Testing Data

(adapted from <https://www.fldoe.org/accountability/assessments/k-12-student-assessment/results/2023.stml>)

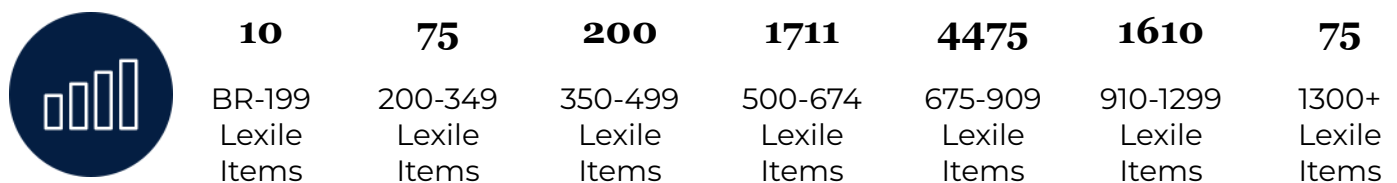
In 2023, the state transitioned from Florida Standards Assessments (FSA) to Florida Assessment of Student Thinking (FAST) for English Language Arts (ELA) and Mathematics. The 2022-23 for FAST and Benchmarks for Excellent Student Thinking (B.E.S.T.) End-of-Course (EOC) assessments are based on **provisional** achievement level cuts that are linked to each assessment's respective 2021-22 reporting scale. Comparisons should not be made between the 2023 data and previous years' data.

Collection Analysis

The collection is developed for and influenced by students, their interests, academic needs and alignment to the curriculum. The data below is a snapshot of the collection based on a Titlewise Analysis from July 2023. Purchasing or weeding after that time is not reflected in this data.



Library media resources are distributed across the ***Lexile reading level ranges*** noted below.



Collection Analysis by Category

The information collected in this section provides a detailed look at the current library collection by classification and genre. The information was gathered from Follett Destiny, the library management system, and Titlewave, the vendor's ordering and analysis tool.

Section	# of Titles	Average Age
Computer Science, Information & General Works	67	2011
Philosophy & Psychology	58	2010
Religion	59	2008
Social Sciences	827	2009
Language	73	2005
Science	437	2010
Technology	461	2009
Arts & Recreation	685	2008
Literature	546	1994
History & Geography	379	2012
Biography	507	2009
General Fiction	7272	2008
Graphic Novels	446	2013

Category Reflection

- There are several areas of non-fiction that need to be updated by adding more copies and weeding out aged titles.

Representation Analysis

Enrollment & Demographic Data					
737 2023-24 Student Enrollment as of September 7, 2023	Subgroups		Federal Ethnicity		
	12% ELL	12% ESE	29% Hispanic	71% Non-Hispanic	
Federal Race Category					
69% White	24% Black	0% Native	2% Asian	0% Pacific	3% Multicultural

To deepen focus on strategic collection development, specific sections of the collection were analyzed in detail to determine whether the media center collection reflects and represents various points of view and experiences. The goal is to provide a balanced collection that can be both a mirror, to reflect a reader's experience, and a window, so readers can experience different viewpoints.

Results

Based on the available school data of Maitland MS in comparison to Collection Analysis results, it was found that:

Student Representation	% of Students	Total # of Titles	Total % of Titles	Avg. Age of Titles
Hispanic	29%	294	2%	2010
Black	24%	610	4%	2009
Asian	2%	116	1%	2009

Strategic Focus

This page lists the priorities for selection and weeding for each school year and includes the action, updates, and outcomes. This is subject to change due to funding and time constraints.

School Year	Strategic Focus
2023-2024	Selection Priorities <ul style="list-style-type: none">African American titlesLatinx/Hispanic titlesStudent requests and interestFill gaps in series
	Weeding Priorities <ul style="list-style-type: none">Damaged paperback booksBooks with low circulationAged non-fiction titlesDistrict weeding focus
2024-2025	Selection Priorities <ul style="list-style-type: none">African American titlesLantinx/Hispanic titlesStudent requests and interestUpdate aged non-fiction sections
	Weeding Priorities <ul style="list-style-type: none">Aged non-fiction titlesDistrict weeding focusBooks with low circulation

Budget and Purchasing Plan

This page outlines the current budget available and specifically lists the priorities for this school year (2023-2024).

Annual Budget 2023-2024

State Funds	
Source	Amount
State (1001111000)	8,115.41
Internal Accounts	
Source	Amount
Library Fines and Book Fair Profits	2,620.75

Purchasing Plan 2023-2024





Approximate Purchasing Plan	
Purpose	Amount
African American titles	20%
Latinx/Hispanic titles	20%
Student requests and interests	35%
Updating Series (Fiction and Graphic Novels)	20%
Sunshine State Books	2%
Book subscriptions	3%
TOTAL	100%

Year-to-Year Collection Change

The information below represents the year-to-year change within the library media center collection from the 2022-23 to 2023-24 school year. The 2022-23 data is based on a collection analysis from June 2022, while the 2023-24 is based on a collection analysis from July 2023.

Data Reflection

- The items per student went up by two because our enrollment went down.

2022-23 Purchased and Weeded Materials		
Materials Added to the Collection	42	Materials Weeded from the Collection 21
Category	2022-23	2023-24
 Items in the Collection	13,635	13,685
 Items per Student	17	19
 Average Age of Collection	2008	2007
 Representative Titles in the Collection	41%	42%